

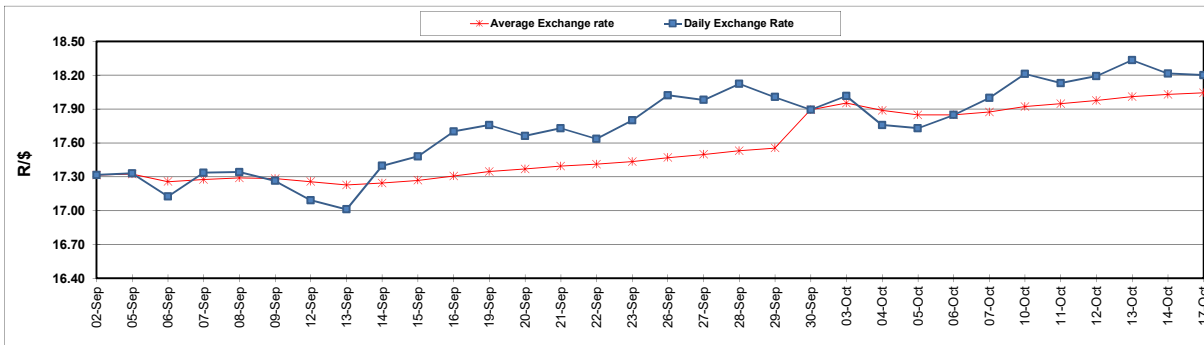
	PETROL 95 ULP	PETROL 93 ULP & LRP	DIESEL 0.05%	DIESEL 0.005%	ILL. PAR.
GAUTENG PUMP PRICE (SA c/l) AS FROM 05/10/2022	2,236.000	2,206.000	-	-	-
WHOLESALE PRICE (SA c/l) AS FROM 05/10/2022	-	-	2,406.100	2,430.500	1,699.288
SINGLE NATIONAL MAXIMUM RETAIL PRICE	-	-	-	-	2,240.000
BASIC FUEL PRICE - 17/10/2022 (SA c/l)	1,212.466	1,185.706	1,719.819	1,748.232	1,641.064
PRESS RELEASE CONTRIBUTION TO BFP 05/10/2022 - 17/10/2022 (SA c/l)	1,145.750	1,115.750	1,523.630	1,548.030	1,481.128
UNIT OVER/(UNDER) RECOVERY - 17/10/2022 (SA c/l)	(66.716)	(69.956)	(196.189)	(200.202)	(159.936)
AVERAGE BASIC FUEL PRICE 30/09/2022 - 17/10/2022	1,215.076	1,190.726	1,682.279	1,708.442	1,570.368
AVERAGE UNIT OVER/(UNDER) RECOVERY 30/09/2022 - 17/10/2022	(43.826)	(52.726)	(161.149)	(164.162)	(73.990)

### ANALYSIS MOVEMENT OF AVERAGE OVER/(UNDER) RECOVERY

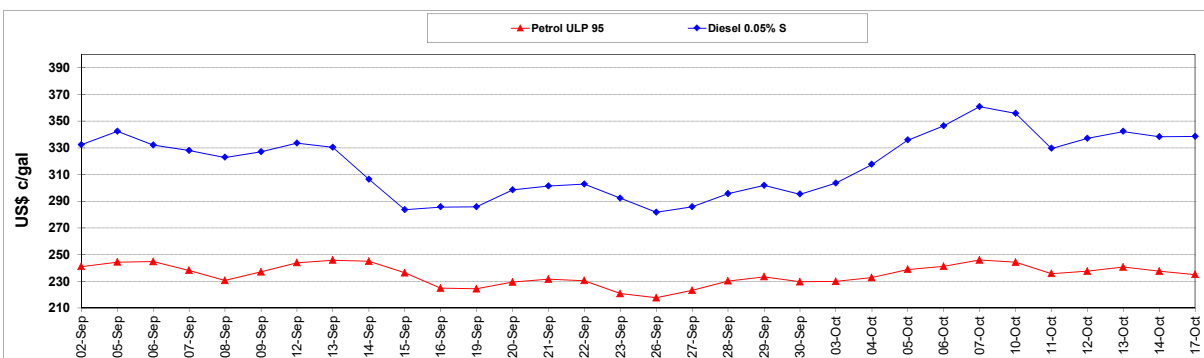
	PETROL 95	PETROL 93	DIESEL 0.05%	DIESEL 0.005%	ILL. PAR.
- MOVEMENT IN INTERNATIONAL PRODUCT PRICES	(41.287)	(50.238)	(157.634)	(160.592)	(70.709)
- MOVEMENT IN EXCHANGE RATE	(2.539)	(2.488)	(3.515)	(3.570)	(3.281)
AVERAGE UNIT OVER/(UNDER) RECOVERY 30/09/2022 - 17/10/2022	(43.826)	(52.726)	(161.149)	(164.162)	(73.990)

### R/\$ EXCHANGE RATE - (R/\$18.2003 - 17/10/2022)

#### EXCHANGE RATE USED IN BASIC FUEL PRICE



#### INTERNATIONAL PRODUCT PRICES OF BASKET USED IN BASIC FUEL PRICE



#### BASIC FUEL PRICE IN SA CENTS PER LITRE

